

LEADER READER

A Message from our President:

Dear Friends:

HOW SAD!

Several days ago our Executive Director, Harriet Coren, received a phone call from a reporter of the *St. Petersburg Times*. He was in receipt of a Leadership Pinellas 2002 evaluation form for that year's Tallahassee trip. The form was sent to him anonymously.

Harriet requested a copy of the form be fax'd to us for review. She validated the form as authentic, and noted that the evaluation form was not particularly kind to a current candidate seeking state office.

As is typical of our trips to Tallahassee, the class had an opportunity to meet with a number of elected officials and, subsequently, evaluated each official.

HOW SAD that a member of Leadership Pinellas has decided to "put at risk" the twenty seven years of building "good will" with our elected and public officials. Whatever the motive, it appears that the evaluation form was sent to the *Times* in an effort to somehow influence that particular race.

In the event the reporter had additional questions, Harriet instructed him to contact me. He did. I explained that while the form was authentic, it was four-year-old information, and we had no way of knowing who authored any of the responses. Additionally, I asked him to consider how the public duplication of the evaluation form would jeopardize Leadership's well-earned trust and confidence.

I also explained that Leadership Pinellas has always been very careful to be "non-political" in its activities, and the exploitation of such material could do significant, and undeserved damage to the reputation of Leadership Pinellas.

HOW SAD that a member of Leadership Pinellas would knowingly attempt to use privileged Leadership Pinellas information to further his or her special agenda.

HOW SAD to think that a member of Leadership Pinellas would place his/her special interests over the long term well-being of an organization that has done so much good for so many.

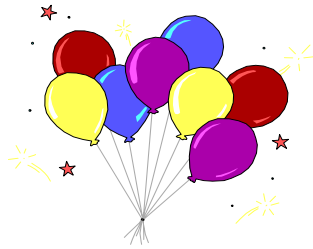


Bud Elias '01
President

Bud Elias

You and your guests are cordially invited to

The Leadership Pinellas Pre-Holiday Happening Party



Saturday, November 18, 2006

6:00 to 8:30 p.m.

at

The Williams/Seel Beach House

16 South Gulf Boulevard

Indian Rocks Beach

Attire: Festive Casual for Outdoors

Enjoy: Heavy hors d'oeuvres and wine/beer

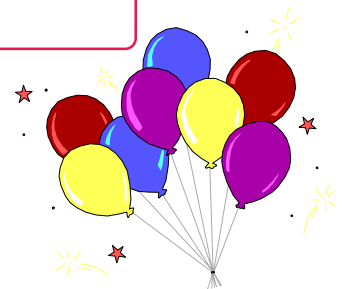
**Please bring: Medium/ Large Diapers, Sand Toys, Ride Toys,
Puzzles, Books, Paper Products or Cash/Check
Donations are greatly appreciated
for Community Pride Child Care, Inc.
PLEASE DO NOT WRAP GIFTS**

Cost: \$15.00 per person

**We can now take your VISA or MasterCard payments
by phone to Harriet Coren at 727-784-8641
or
mail your check made payable to Leadership Pinellas
P.O. Box 5986, Clearwater, FL 33758-5986**

**RSVP: email to harrietcoren@ij.net
or phone 727-585-8889 by Nov. 13**

**Directions: Take Ulmerton/Walsingham west to
Gulf Blvd. Turn left at traffic light onto
Gulf Blvd. 3/4 miles to the Seel House on
the right hand side. Look for the balloons!
Parking is limited, please carpool if possible.**



Class of 2007 Arts and Culture Program Day, October 19, 2006

by *Allyn Childress, Class Reporter*

A wide variety of education and entertainment was provided for the Class on Thursday, October 19th for Arts & Culture Day. We journeyed first to St. Petersburg where we discovered (or rediscovered) many wonderful places.

The day began with a very special tour of the Florida Holocaust Museum thanks to **Nancy Greenberg '05**. Nancy was not only our official leader for the day, but she was also our very personal guide through the museum. Hearing her family's story of survival, and seeing the photo of her mother on display, gave us a more intimate view of the museum. Thank you also to The Clearwater Country Club for sponsoring breakfast and for giving us a great start to our day.

Next stop: The American Stage, where the staff greeted us with much enthusiasm despite their being in transition between productions. We were given a "behind-the-scenes" tour including the magical costume shop, the stage under construction, and a brief rehearsal. This last item has inspired many of the Class to attend a full presentation of *All the Great Books (abridged)*.

Following our stage tour, Ann Wykell, Manager of Cultural Affairs for the City of St. Petersburg, hopped on board to provide a bus tour of some of the city's cultural facilities. Afterwards, we were off to the Raymond James Financial Center at the Carillon office park, where we were treated to a tour of the Center's extensive art collection.

During lunch, sponsored by Raymond James, a panel discussed the myriad opportunities for Pinellas residents to see, hear, and try their hands at art and culture throughout the County. Peter Kageyama, Creative Tampa Bay, focused on the need to expand the definition of arts and culture and to use these resources to attract and retain talent in our area. Evelyn Craft, Executive Director of the Arts Center of St. Petersburg, described the exciting new plans for the Center as it moves and expands. Along with art exhibitions, the Center provides classes and workshops in numerous media. **Kathleen Monahan '90**, Cultural and Civic Services Director for the City of Tarpon Springs, described the opportunities available in the north end of the county. These include the City's Performing Arts Center, Cultural Center, Heritage Museum, Safford House Museum, and Historical Society Depot Museum.

After lunch we headed to Largo where a trio of sites awaited us: the Florida Botanical Gardens, Heritage Village, and the Gulf Coast Museum of Art. We were greeted by **Penelope Welch '03**, Development Director of the museum. On our tour we were able to roam through soaring galleries, sculpture gardens, and historic buildings and even learn a bit about museum curating.

The night concluded with food, drink, and merriment at the opening night of the Clearwater Jazz Holiday. Kenny G performed for a standing-room-only crowd at Coachman Park. Thanks to **Pat Perzel-Geller '93**, we were treated to the best seats, food, and views in the park! Thank you to Pat, Nancy, **Jan Luth '06**, and **Liz Warren '05** for making this day (and night!) a huge success! Next up: Business & Technology on November 8th.

2006-2007 Program Days

11/8/06	Business and Technology	3/18 to 3/20/07	Tallahassee Trip
1/13/06	Government and Media	4/11/07	Criminal Justice
1/1/07	Education	5/9/07	Environment & Infrastructure
2/14/07	Health	5/12/07	Graduation & Annual Meeting

Website News

www.leadershippinellas.com

Our website is up and running and every effort is made to keep it current.

As Leadership Pinellas projects are planned, they will be included in the "Calendar."

This link is only for our sponsored activities.

However, we do have a "What's New" listing on the right column of our home page. This is for activities not sponsored by Leadership Pinellas, and might be of interest to those in our community. It cannot be a sales pitch nor a personal ad, but hopefully it will help to publicize other volunteer events as they occur.

If a current Leadership member is involved in a volunteer project and would like to have information made available through our website, please send complete information to harrietcoren@ij.net and if appropriate, we will be glad to add it to this feature.

We also have been working with **Tracey Birch '07**, who has been very helpful in sharing her expertise with the Gallery on our website.

As we are able to update some prior year class photos, they will be added by date of activity, so please keep looking at this site - you may be there!

Also on our "to-do" list is to prepare the 2008 Application. This will again be available on our website on the "How To Apply" link.

Please start thinking about friends and/or co-workers who could be good candidates for next year's class and suggest they apply.

The application is very user-friendly and can be easily completed on the computer. I will be available to help (one-on-one) for any questions.

Target date: January 1, 2008.



from the desk of
Harriet Coren,
Executive Director

Additions and changes to 2006-2007 Directory are still coming in, so please bring your directory up to date:

Patricia Colantonio Boswell '03 3712 W. Iowa Avenue, Tampa 33611 phone: 813-835-0730 (h)

Amy Hudock '02 email: amyhudock@synovusbankfl.com

Catherine Ostrander '03 303-995-4457 (cell)

Liz Warren '05 315 Court Street, Clearwater 33756 (w)

Dewey Williams '01 email:
dewey.williams@myclearwater.com (w)

I have 21 extra 2006-2007 directories, thanks to **Arlene Walker Kaslander '04** and Dial Directories, so if you would like another one for your car, or office, or home, please let me know by email: harrietcoren@ij.net. If you want me to mail it, the postage is \$2.07.

Please to continue to support the B.I.N. project the 2006 Class began last year. Locations are:

HEP

1120 N. Betty Lane, Clearwater 33755

Coldwell Banker

1988 Gulf to Bay Blvd., Clearwater 33765

Eastern Financial Florida Credit Union

29383 U.S. 19 N., Clearwater 33761

First Continental Mortgage

424 West Bay Drive, Clearwater, 33770

Our Lady of Lourdes Catholic Church

750 San Salvador Drive, Dunedin 34698

DeLoach & Hofstra, P.A.

8640 Seminole Blvd., Seminole 33772

Pinellas County Court House

400 S. Ft. Harrison Avenue, Clearwater 33756

Postcard Mania

404 S. MLK Jr. Avenue, Clearwater 33755

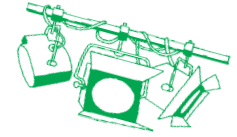
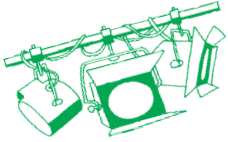
JetMail/Postcard Mania

2145 Sunnydale Blvd., Clearwater 33755

First Home Bank

9190 Seminole Blvd., Seminole 33772

Volunteer Organization Spotlight of the Month Someone Is Waiting Just For You



UPARC Foundation



UPARC Foundation is proud to announce
the 11nd Annual Tampa Bay Festival of Trees
November 22-26, 2006
at the Harborview Center, 300 Cleveland Street, Clearwater
with a Premiere Night Gala - a Royal Coronation
November 21, 2006

Mike and Joan Kline - Honorary Chairs
Anthony and Georgine Brancato - Festival Chairs
Ron and Julie Featherston - Festival Co-Chairs

**Volunteers are needed to assist
with all areas of the Festival
November 14 to 28, 2006**

In addition to over 100 lavishly decorated trees for sale, this year's five-day Festival will feature silent and live auctions during the Premiere Night festivities, a 6 ft. Swarovski Crystal Tree, a gingerbread village, live non-stop entertainment, hand-crafted gifts, an animated window display, an amazing interactive trains display, visits with Santa and fun activities for the children in our Santa's Castle themed Santa's Village.

For more information, visit our website at
www.treefest.com or contact
UPARC Foundation at 712-3993

Volunteer Organization Spotlight of the Month

We would like to make this a monthly feature of our *Leader Reader* as space permits, so if you have a suggestion for a future issue, please submit it to the Editorial Committee, Leadership Pinellas, P. O. Box 5986, Clearwater, FL 33758-5986. Deadline for the next issue is November 24, 2006.

